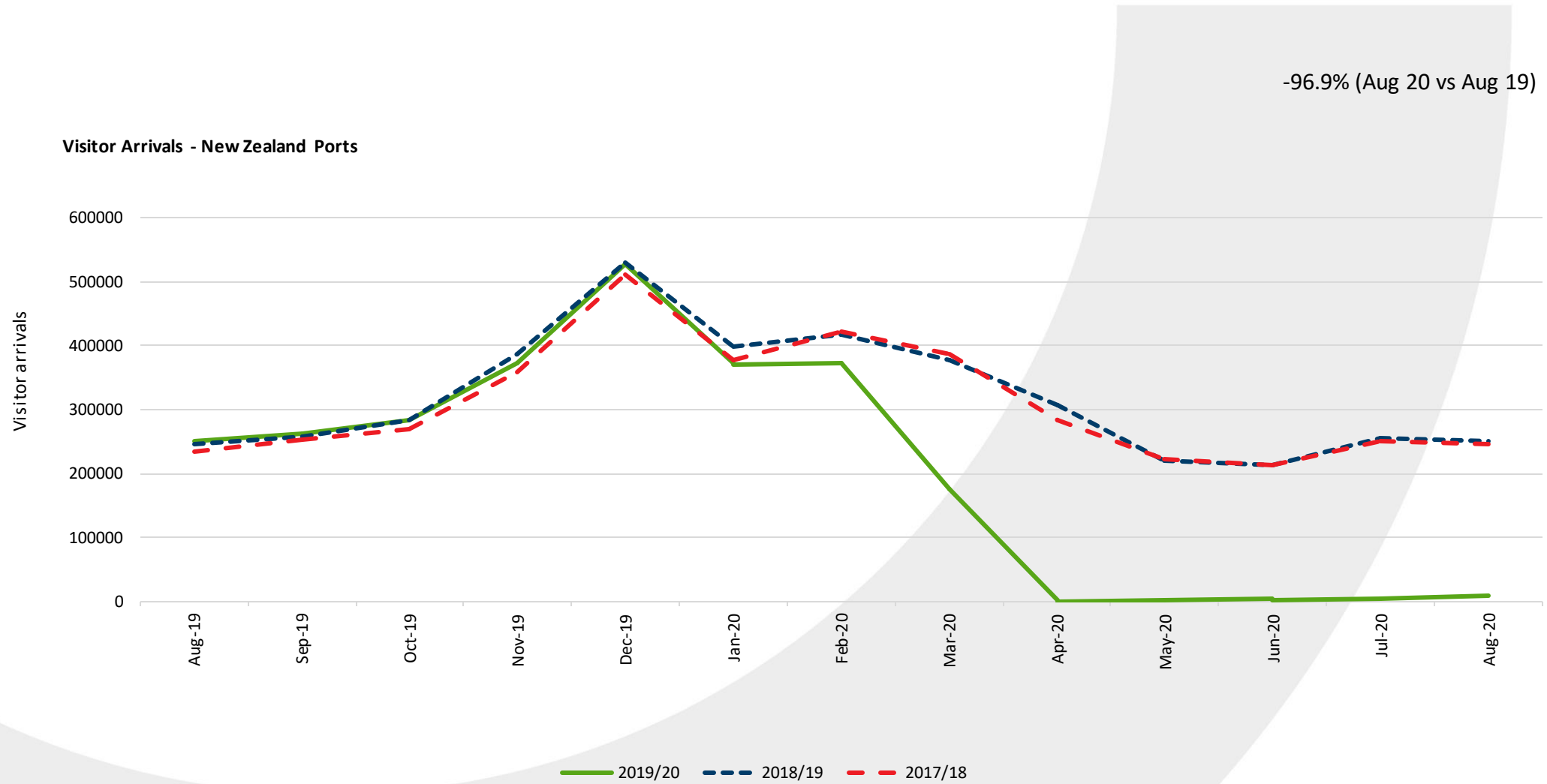


Visitor Trends: August 2020

Presented by: Economics Team

ChristchurchNZ™

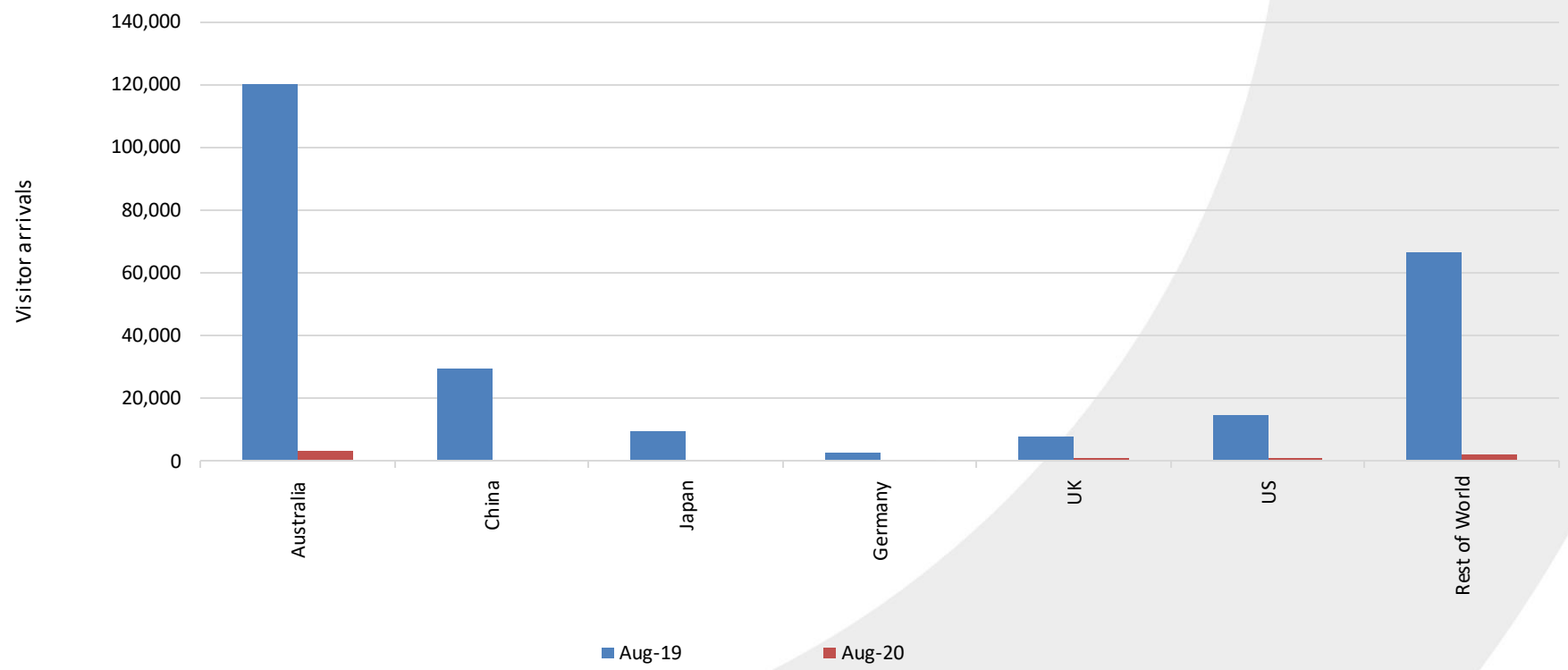
International Arrivals - New Zealand



Source: Statistics NZ

International Arrivals - New Zealand – August 2020

Visitor arrivals by country of residence - NZ ports

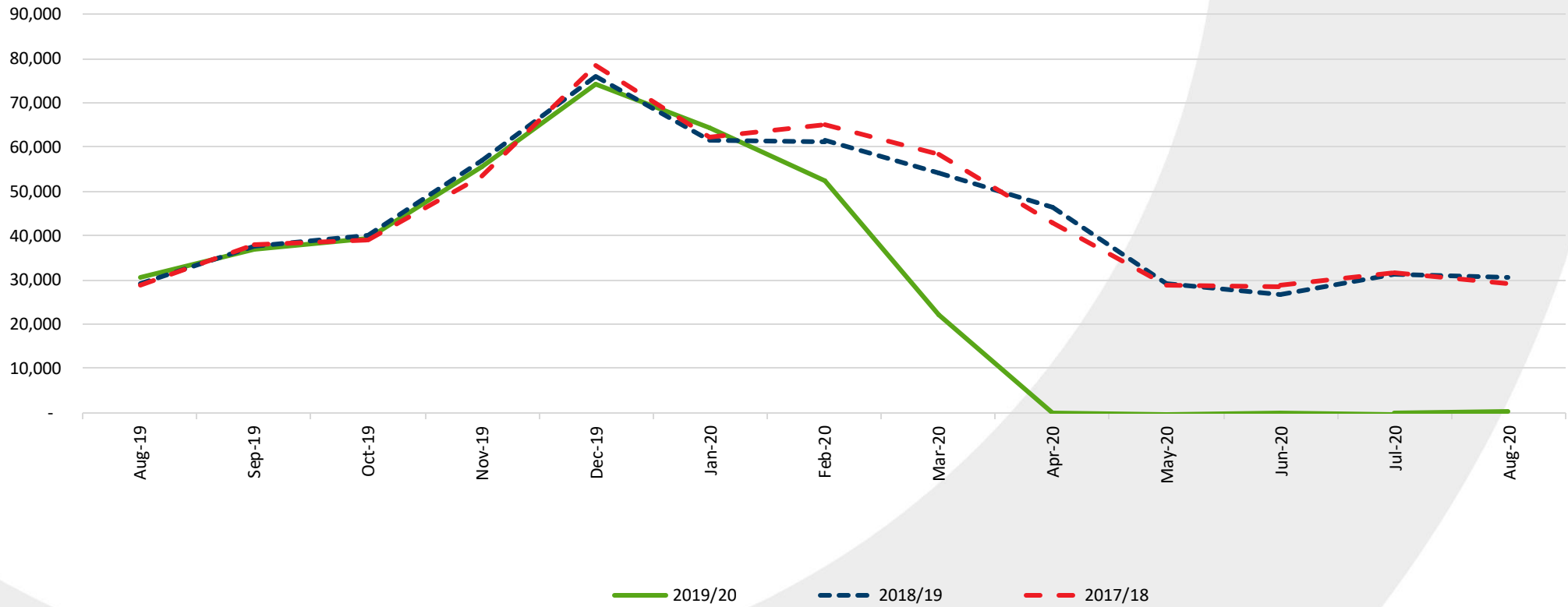


Source: Statistics NZ

International Arrivals - Christchurch

-99.0% (Aug 20 vs Aug 19)

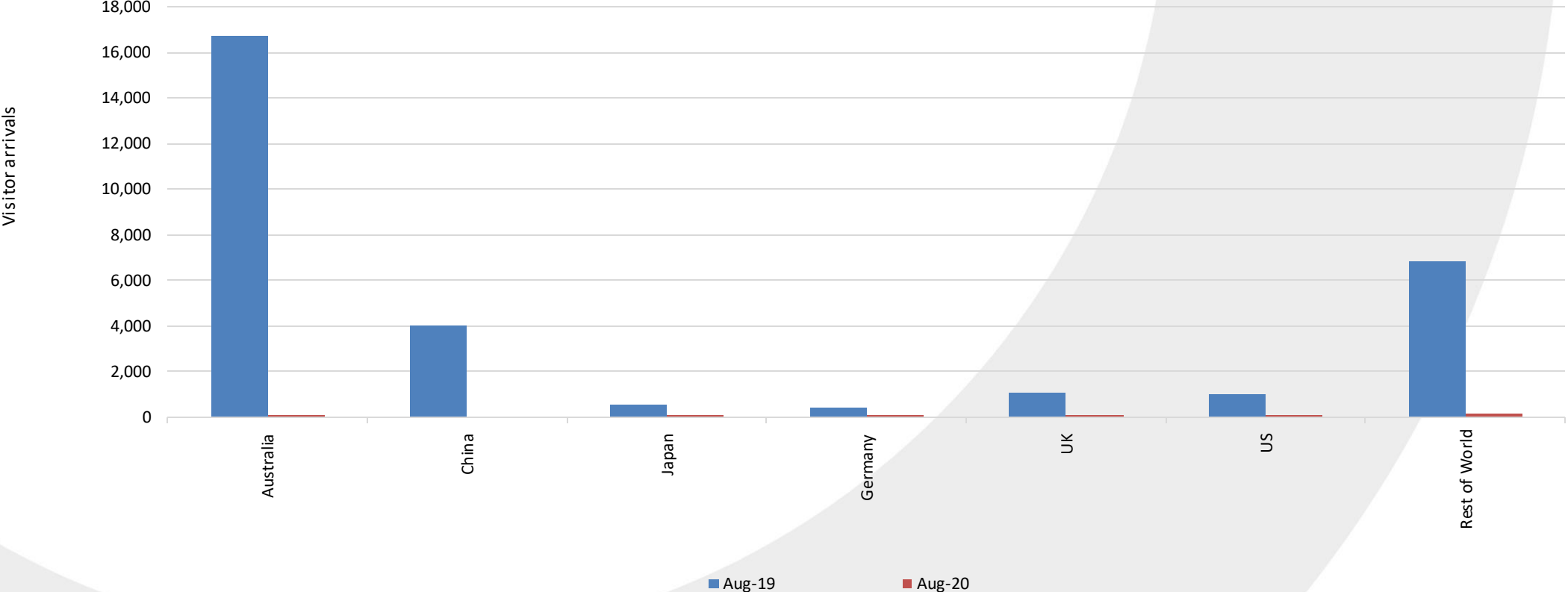
Visitor Arrivals - Christchurch Airport



Source: Statistics NZ

International Arrivals - Christchurch – August 2020

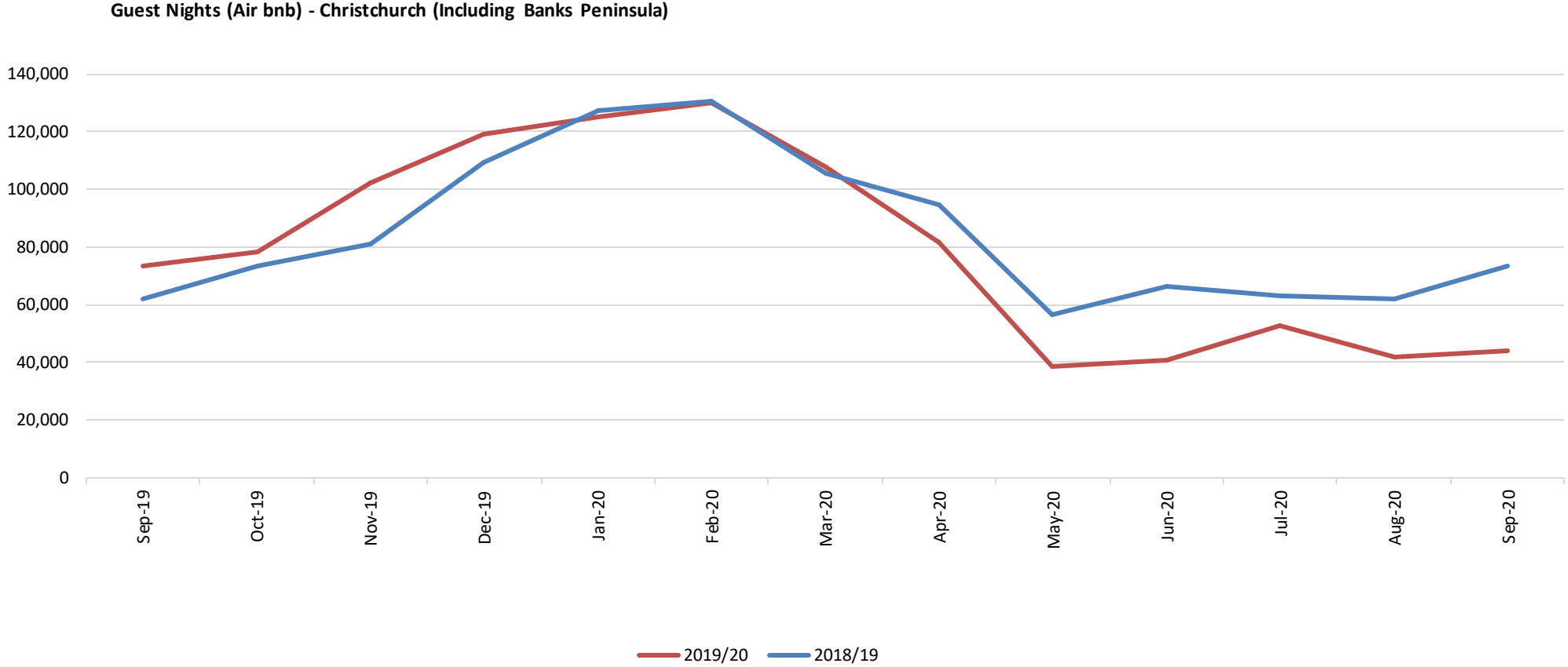
Visitor arrivals by country of residence - Christchurch



Source: Statistics NZ

Total Guest Nights – AirBnB

-39.9% (Sep 20 vs Sep 19)

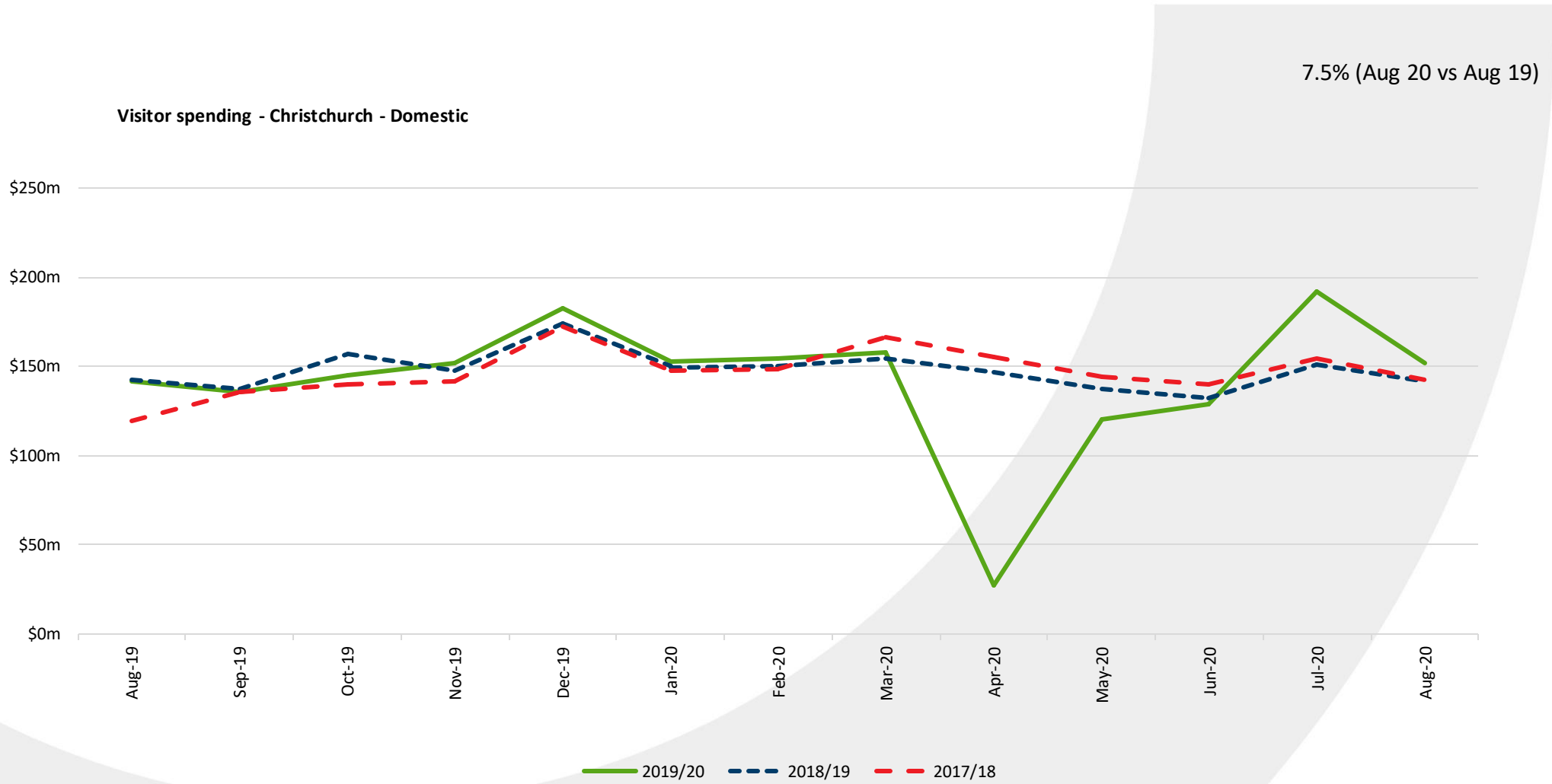


Visitor Spending

Region	Domestic Aug 2020	% Change August 2019	International Aug 2020	% Change Aug 20219
Canterbury	\$208m	14%	\$29m	-68%
Christchurch	\$152m	7%	\$27m	-63%
Auckland	\$162m	-49%	\$90m	-74%
Bay of Plenty	\$96m	4%	\$13m	-61%
Otago	\$221m	38%	\$18m	-87%
Wellington	\$130m	-11%	\$27m	-53%
Total NZ	\$1,279m	-3%	\$227m	-73%

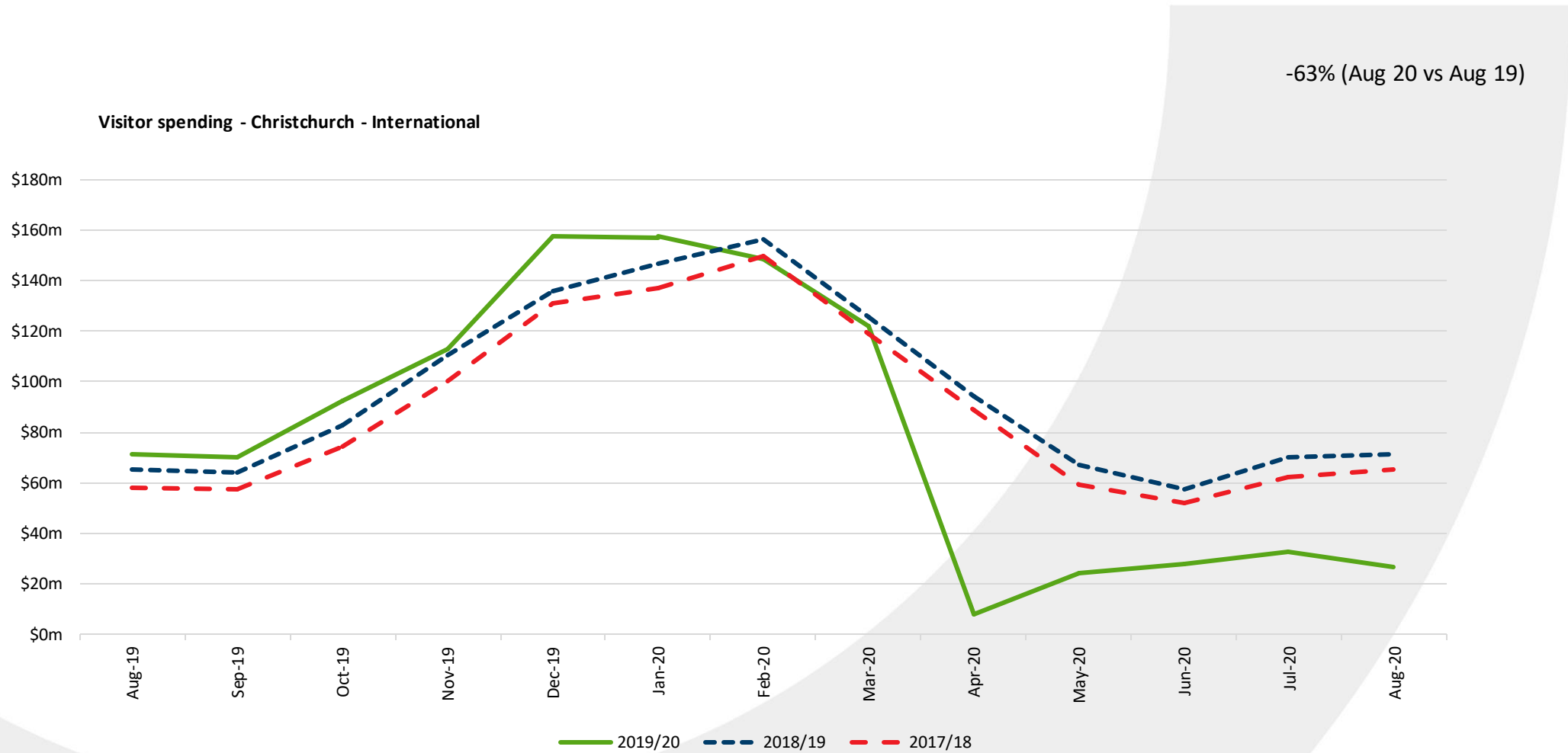
- Christchurch statistics represent the Regional Tourism Organisation ChristchurchNZ = Territorial Authorities Christchurch City, Waimakariri, Selwyn, Hurunui, Ashburton
- Canterbury statistics include ChristchurchNZ

Visitor Spending Christchurch - Domestic



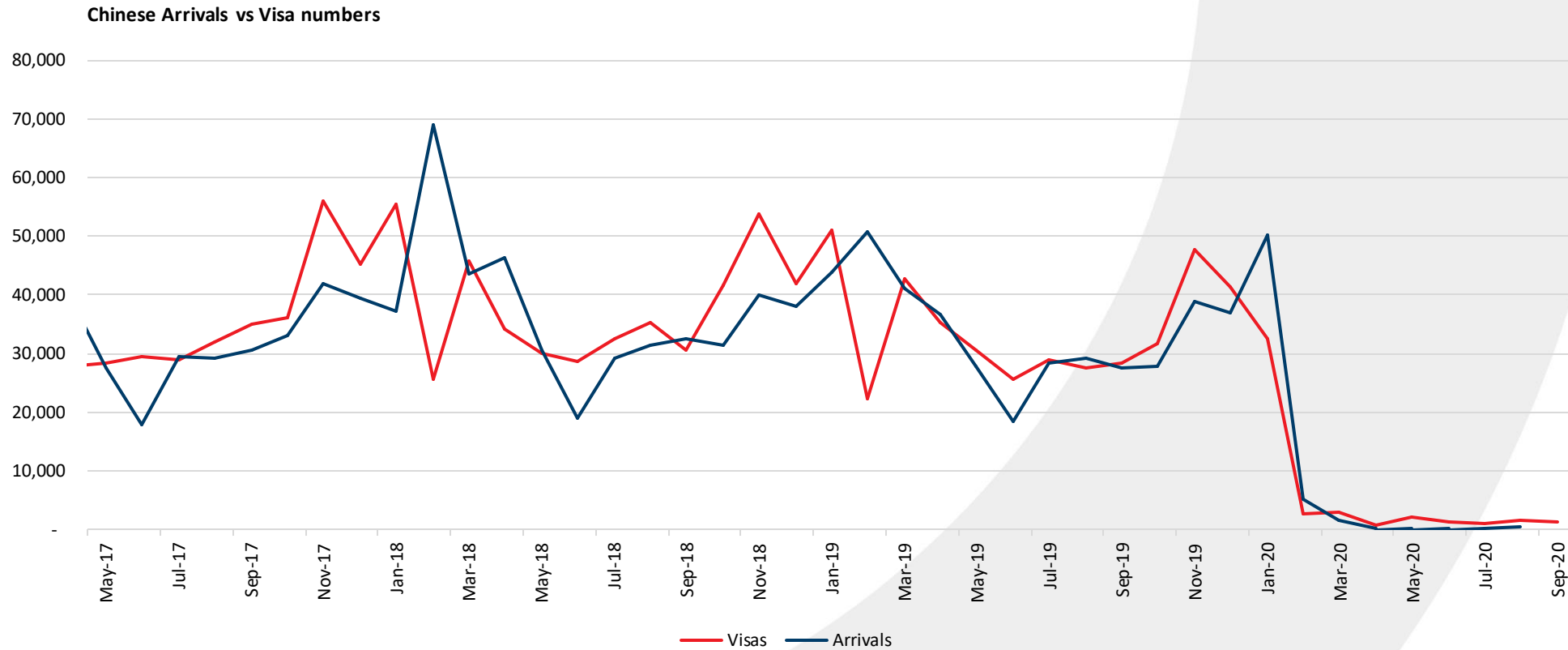
Source: MBIE

Visitor Spending Christchurch - International



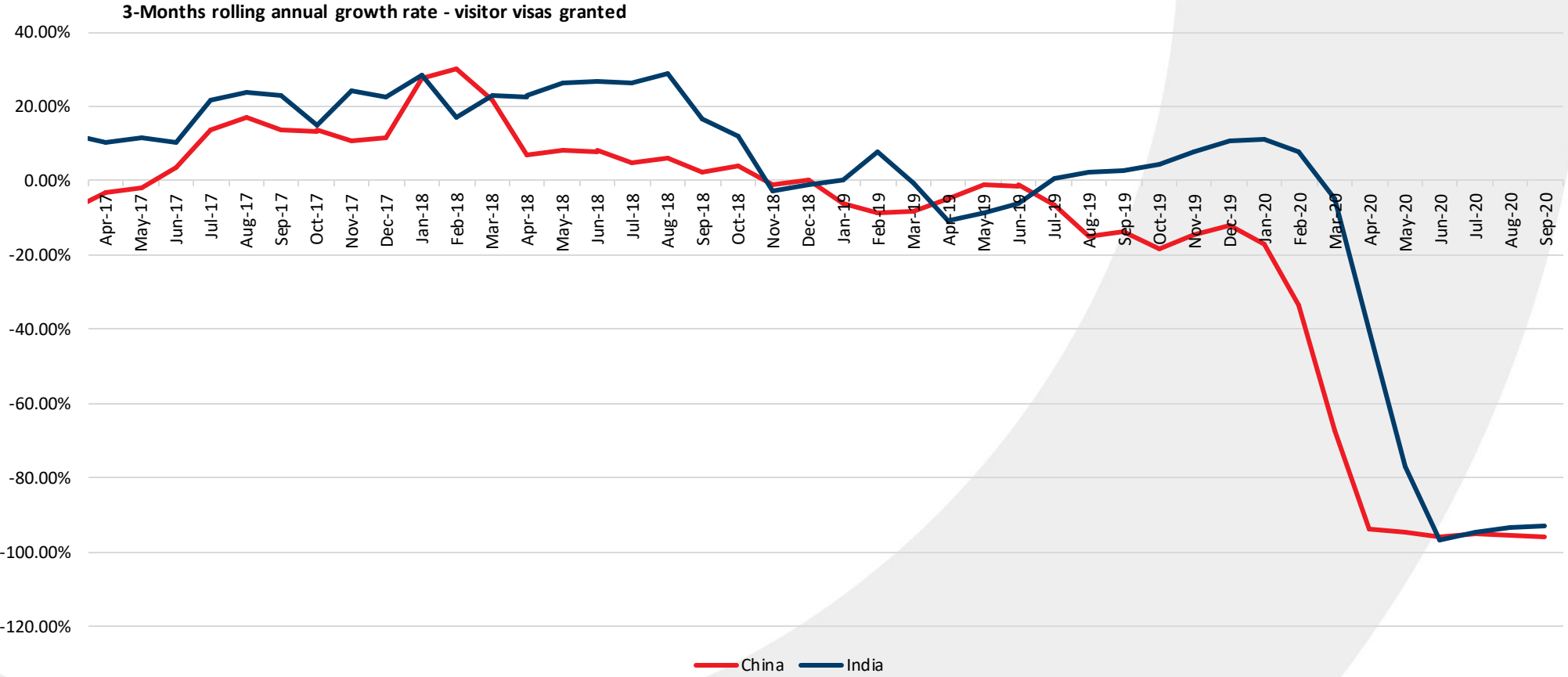
Source: MBIE

Visa Data – China arrivals vs visas



Source: Immigration NZ, Christchurch NZ

Visa Data – Visas granted



Source: Immigration NZ, Christchurch NZ