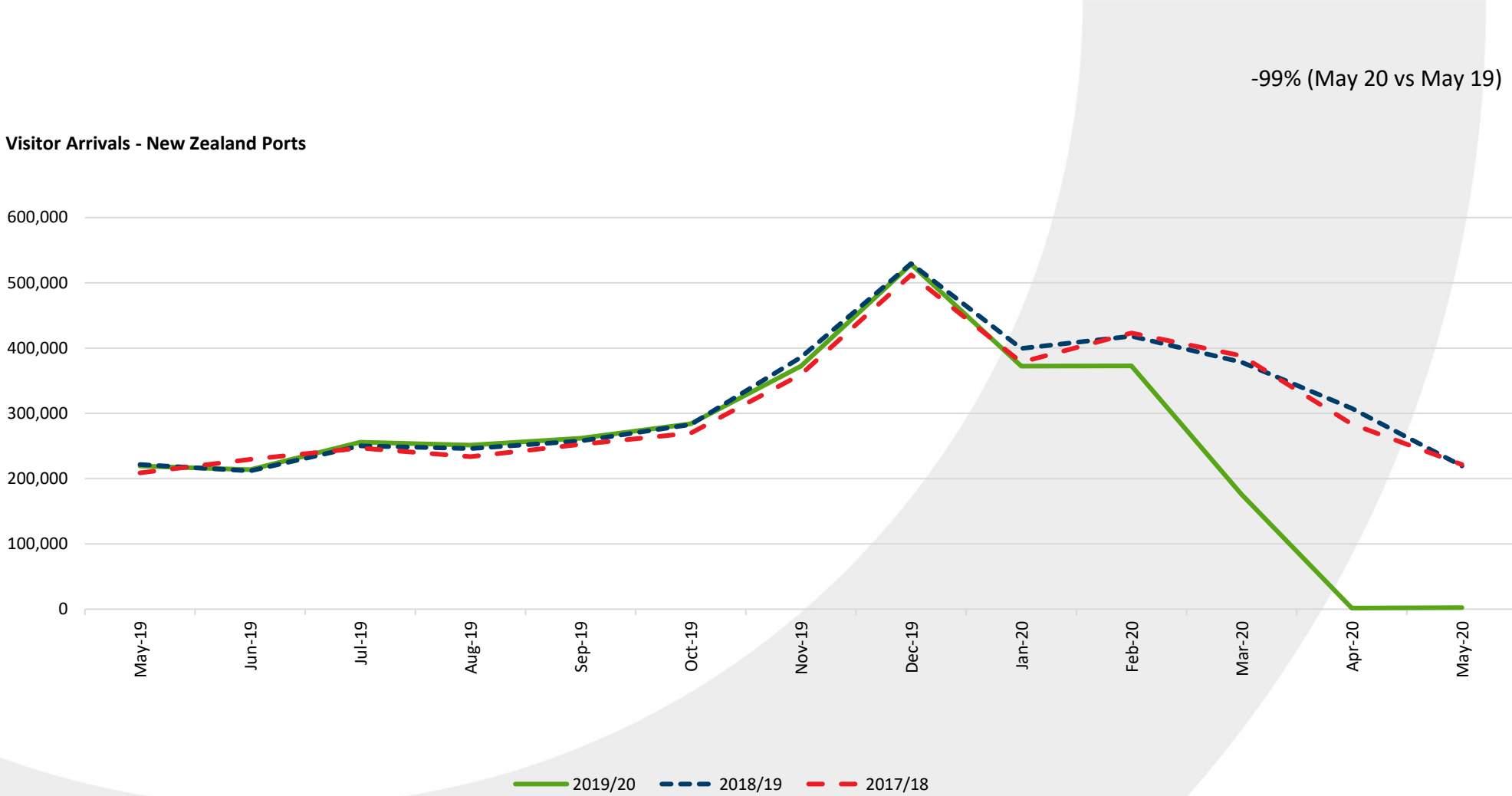


Visitor Trends: May 2020

Presented by: Economics Team

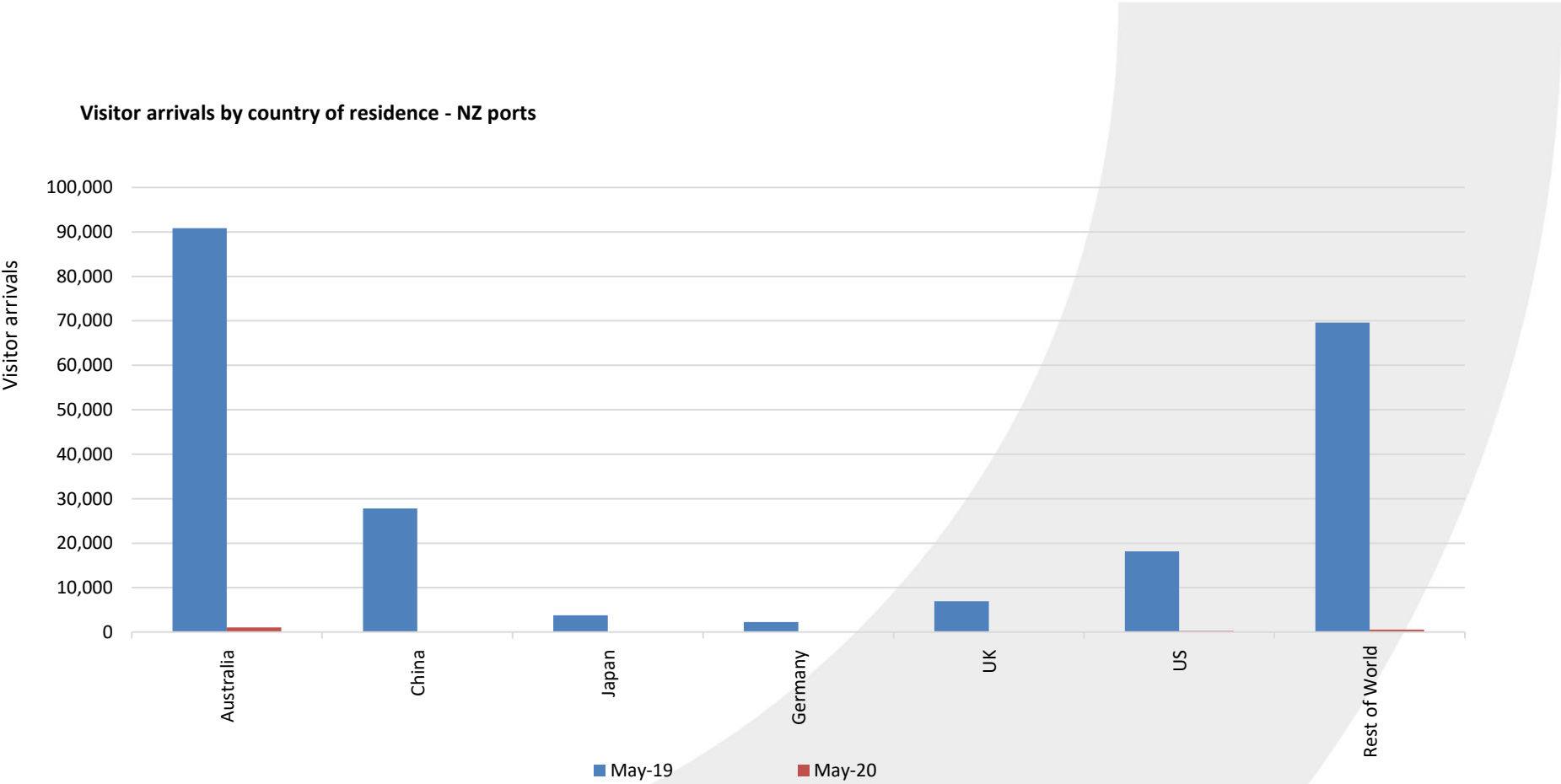
ChristchurchNZ™

International Arrivals - New Zealand



Source: Statistics NZ

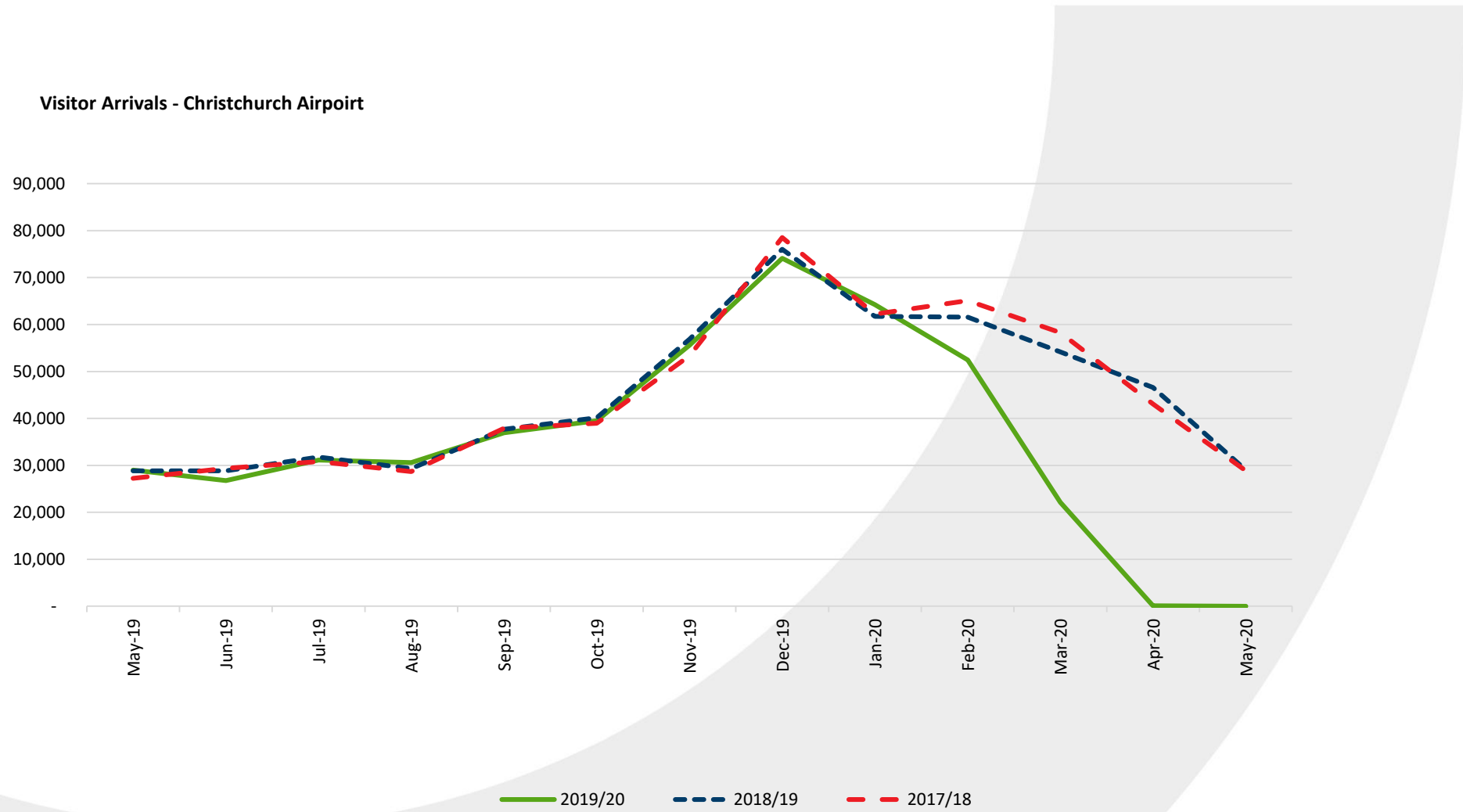
International Arrivals - New Zealand – May 2020



Source: Statistics NZ

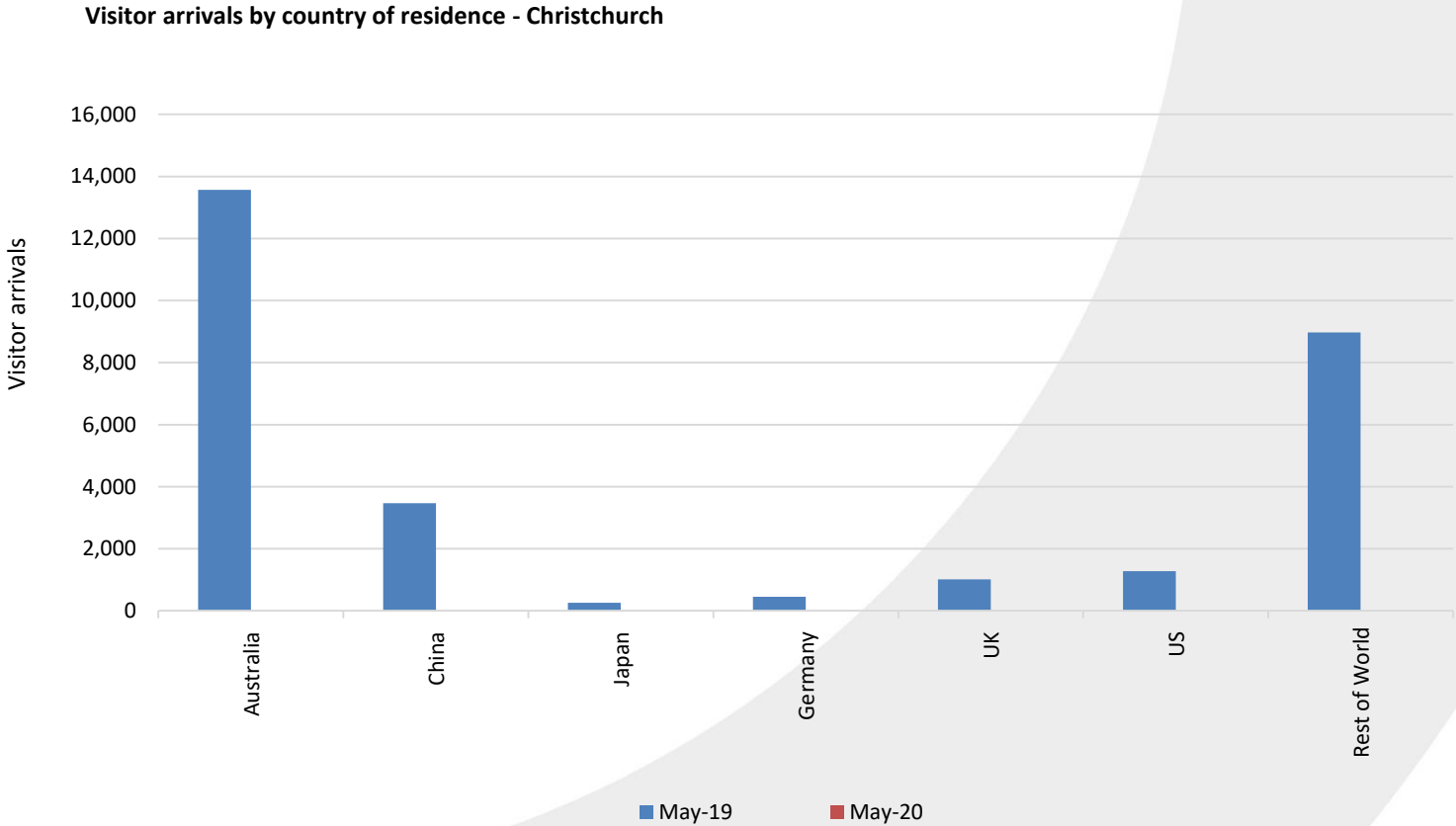
International Arrivals - Christchurch

-100% (May 20 vs May 19)



Source: Statistics NZ

International Arrivals - Christchurch – May 2020

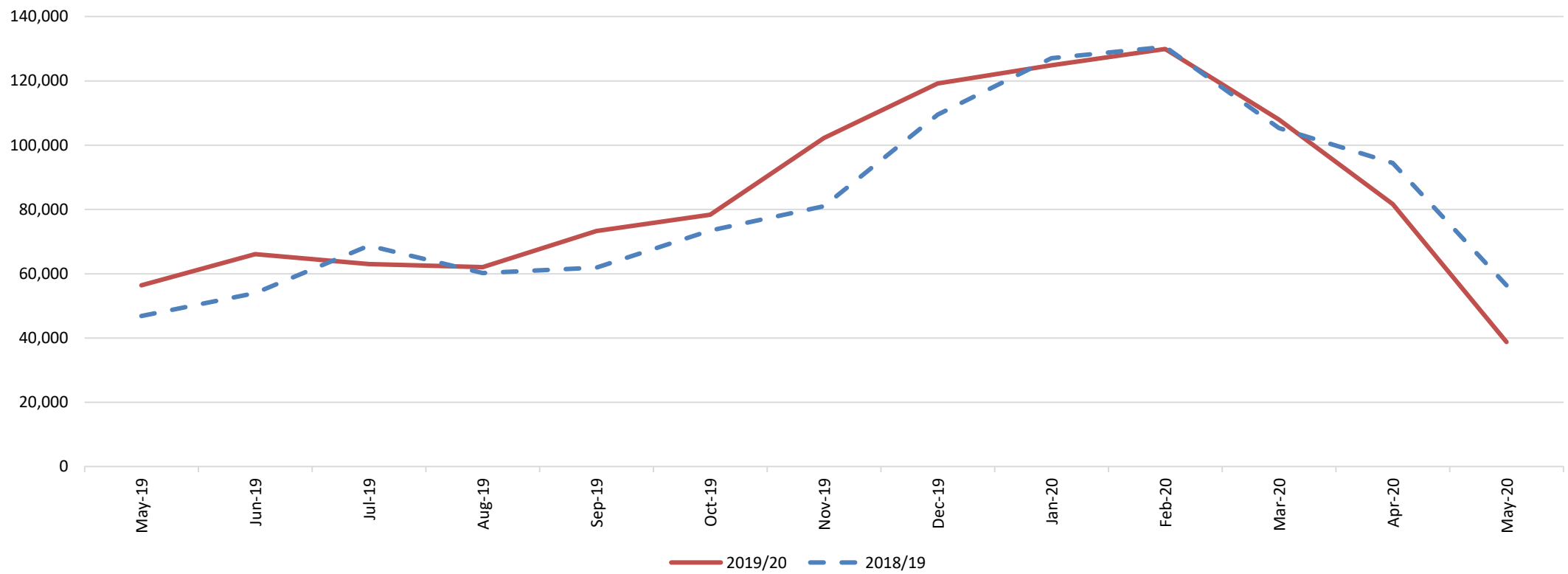


Source: Statistics NZ

Total Guest Nights – AirBnB

-31.3% (May 20 vs May 19)

Guest Nights (Air bnb) - Christchurch (Including Banks Peninsula)

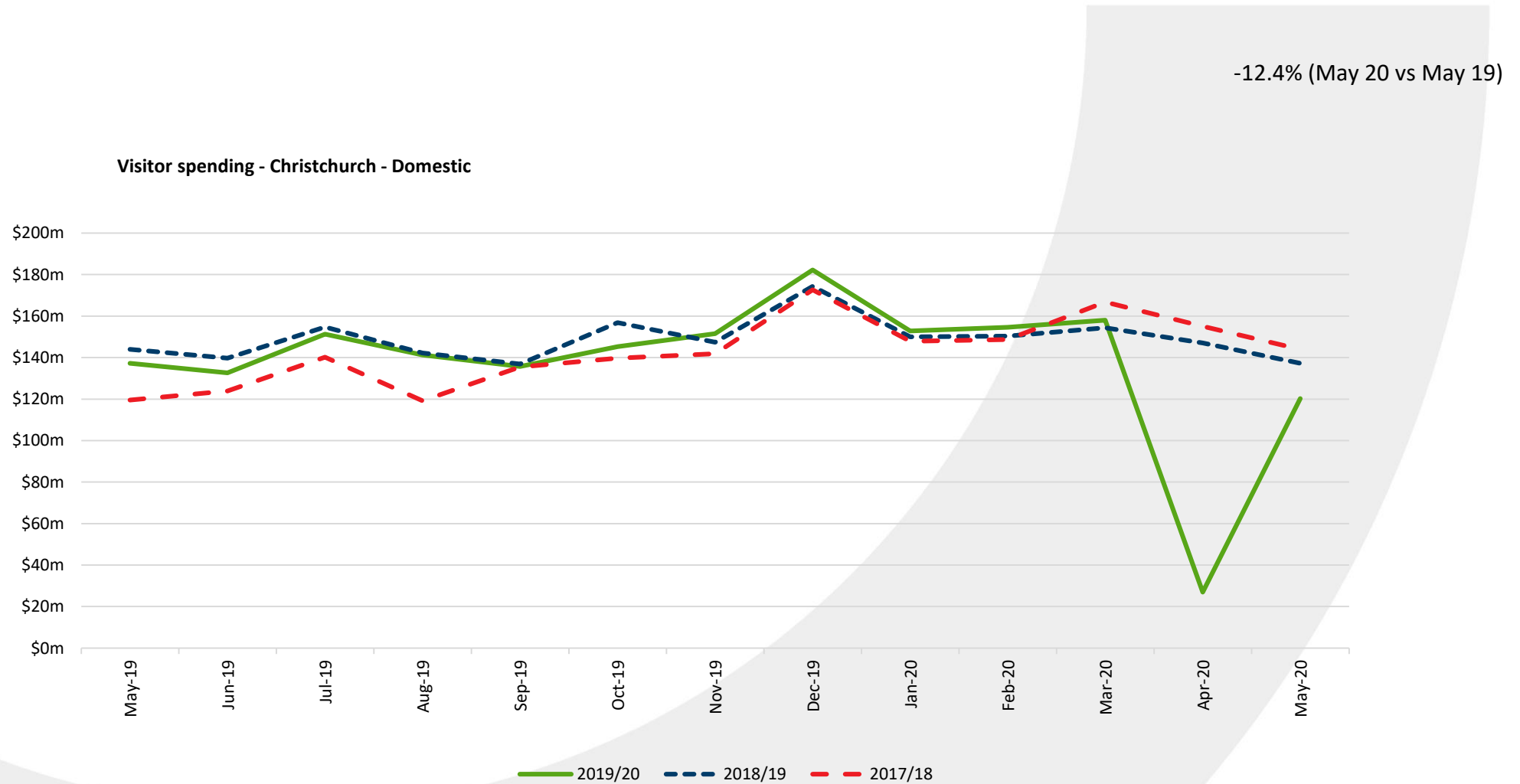


Visitor Spending

Region	Domestic May 2020	% Change May 2020	International May 2020	% Change May 2020
Canterbury	\$120m	-32%	\$24m	-72%
Christchurch	\$90m	-34%	\$22m	-68%
Auckland	\$153m	-54%	\$109m	-66%
Otago	\$77m	-36%	\$16m	-84%
Wellington	\$71m	-55%	\$19m	-67%
Bay of Plenty	\$79m	-20%	\$11m	-65%
Total NZ	\$827m	-37%	\$230m	-68%

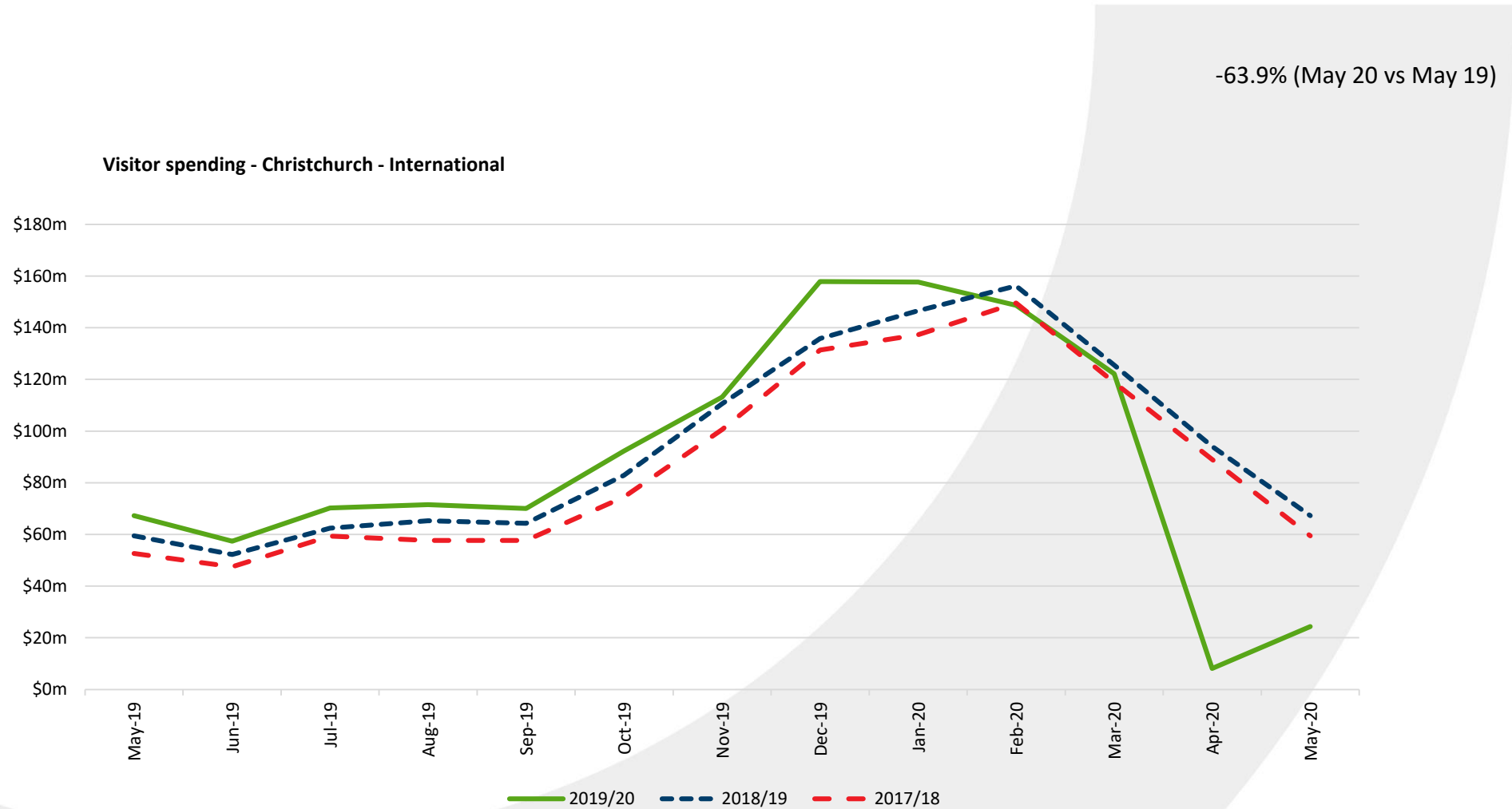
- Christchurch statistics represent the Regional Tourism Organisation ChristchurchNZ = Territorial Authorities Christchurch City, Waimakariri, Selwyn, Hurunui, Ashburton
- Canterbury statistics include ChristchurchNZ

Visitor Spending Christchurch - Domestic



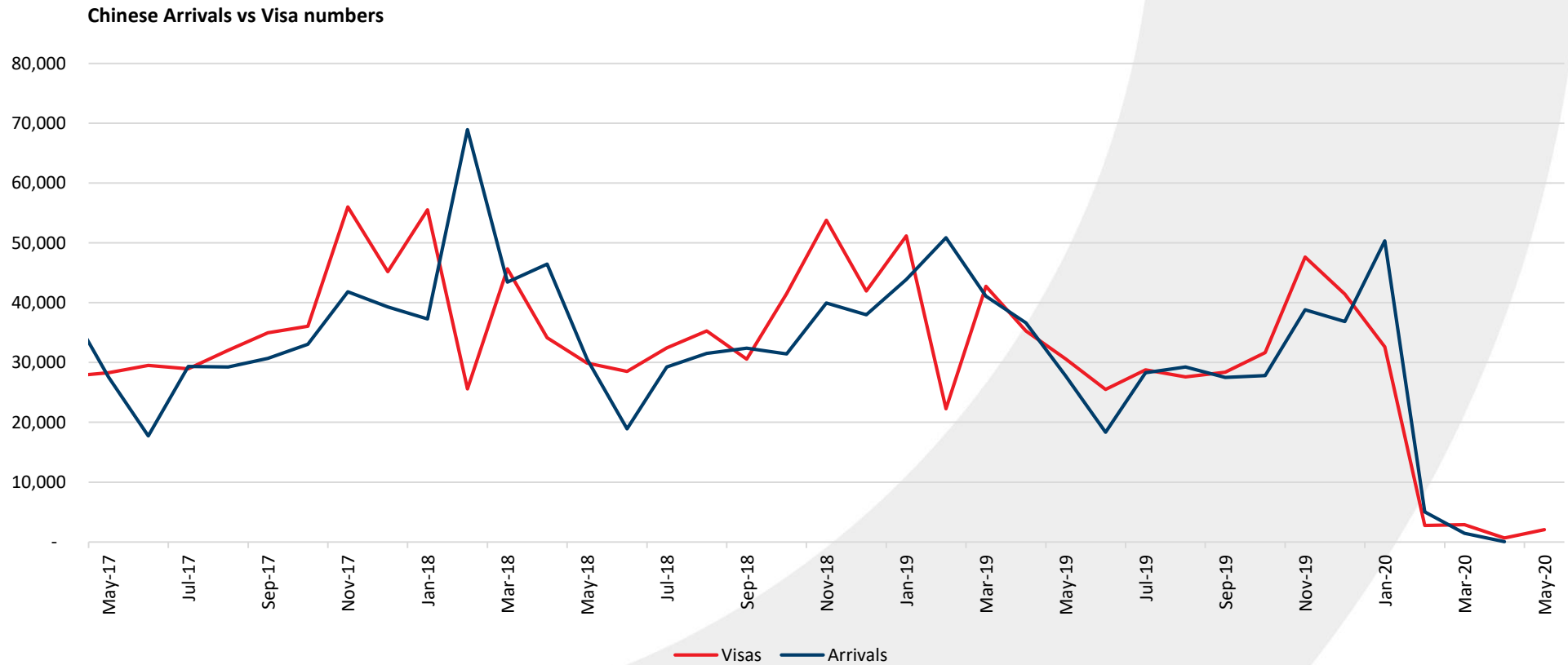
Source: MBIE

Visitor Spending Christchurch - International



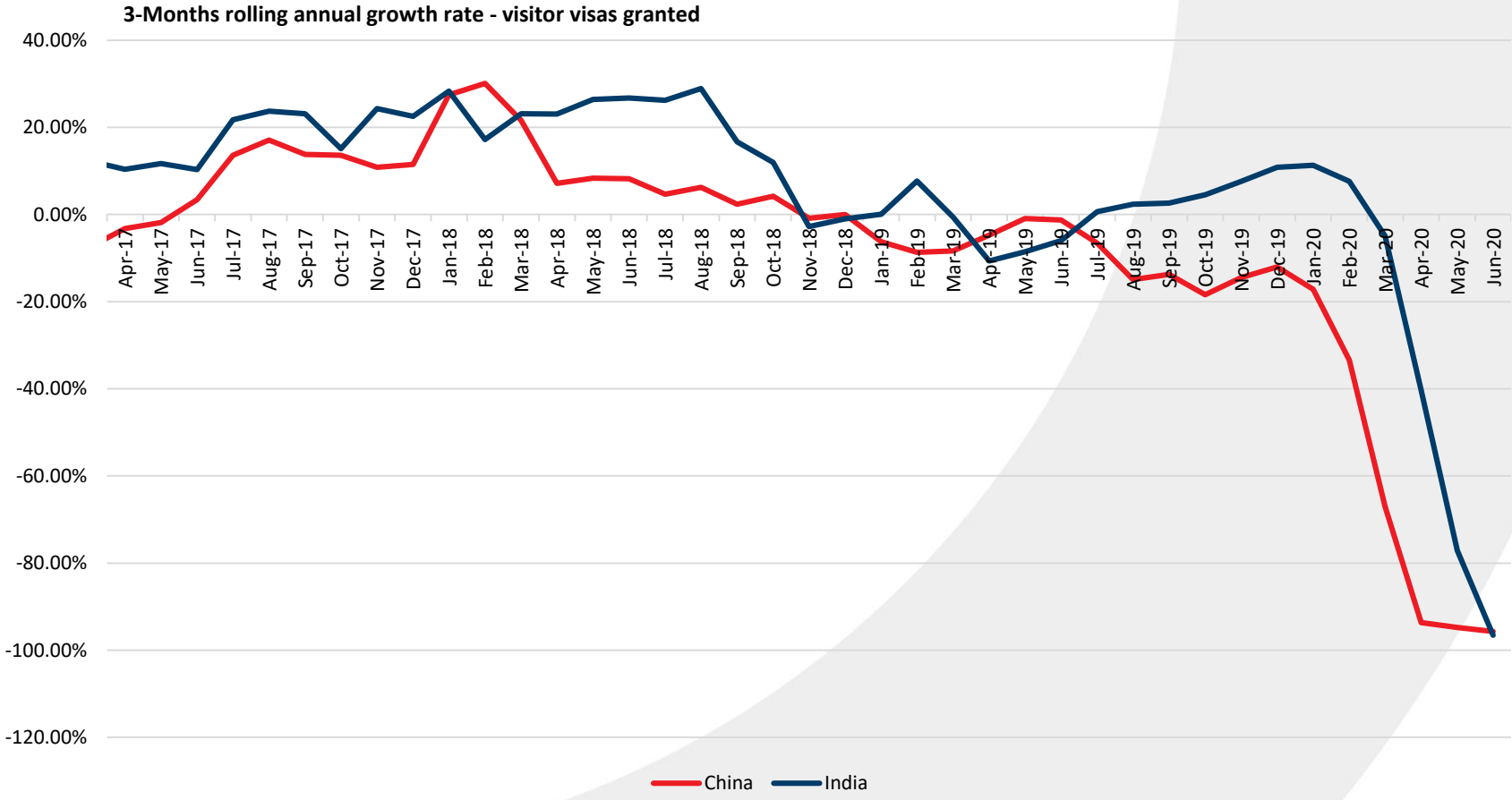
Source: MBIE

Visa Data – China arrivals vs visas



Source: Immigration NZ, Christchurch NZ

Visa Data – Visas granted



Source: Immigration NZ, Christchurch NZ