

screen canterburynz

2019

CANTERBURY & WEST COAST FILM LOOK BOOK | NEW ZEALAND



screen
canterburynz



CURRENT SEASON | spring/summer

INDEX

CANTERBURY & WEST COAST FILM LOOK BOOK

Welcome to Christchurch.....	01 - 02
Heart of Canterbury - film locations 1 hour from Christchurch.....	03
Christchurch Weather.....	04
Domestic & International connectivity.....	05
Christchurch - film locations.....	06 - 10
Your friendly Screen CanterburyNZ film office.....	11
Welcome to Canterbury.....	12
Blockbusters filmed in Canterbury locations.....	13
Canterbury Productions - Images of Projects filmed in Canterbury.....	14
Canterbury - film locations.....	15 - 20
Canterbury - accommodation.....	21
New Zealand screen incentives.....	22
GST & Drone regulations.....	23
Transportation / Logistics.....	24
Crew.....	25 - 26
Pictures of crew on location.....	27
Cast.....	28

An aerial photograph of Christchurch, New Zealand, showing a coastal town on a hillside, a large bay with a sandy beach, and snow-capped mountains in the background. The text 'WELCOME TO CHRISTCHURCH' is overlaid on the image.

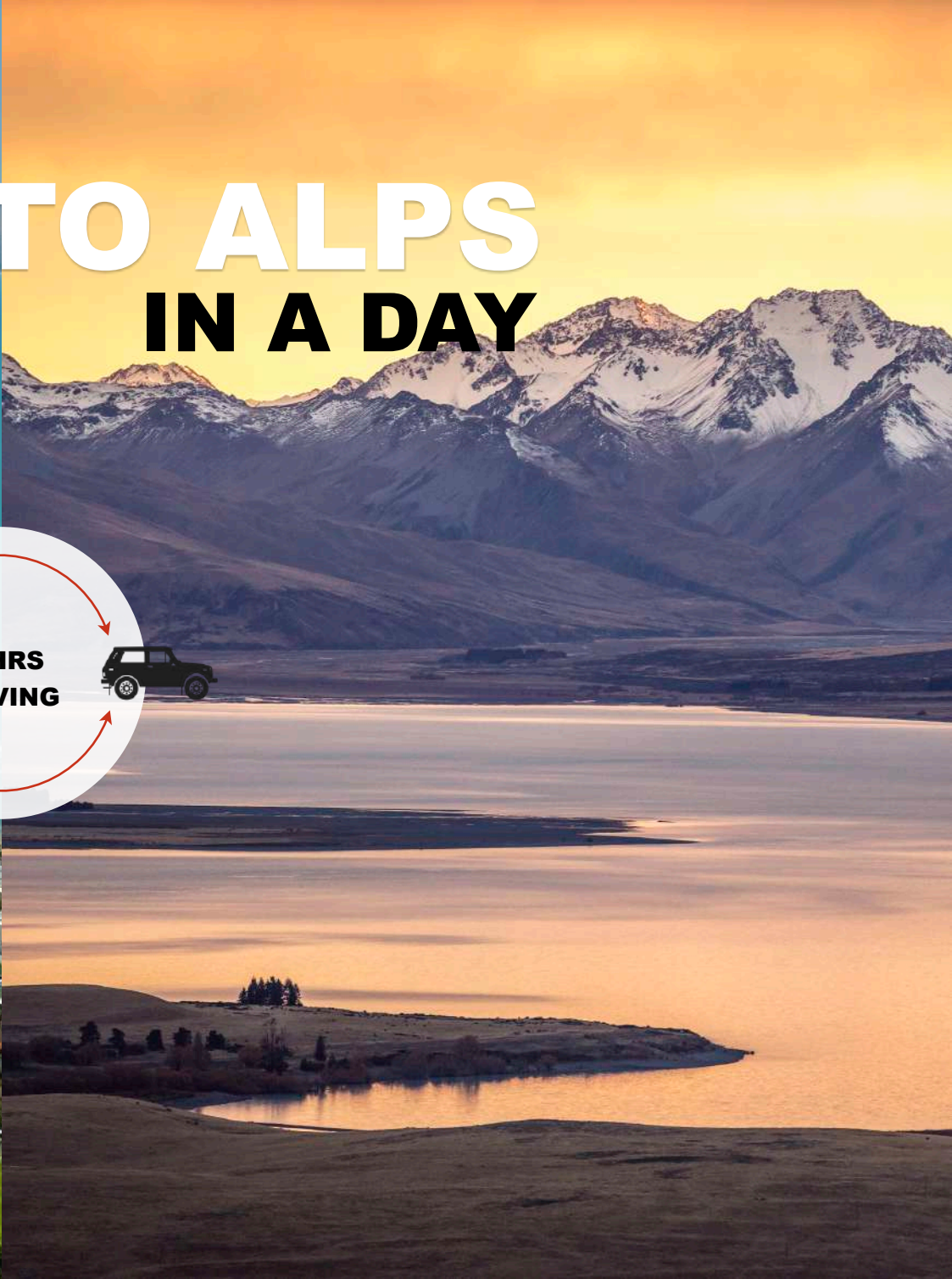
WELCOME TO

CHRISTCHURCH

OCEAN TO ALPS IN A DAY

Canterbury is renowned for its picturesque beauty, from coastline to alpine landscapes. At its heart sits **Christchurch**, New Zealand's newest and second largest commercial centre. **Film makers can access several film locations and terrain within a one - two hour drive from the city.**

OCEAN TO ALPS IN A DAY





HEART OF CANTERBURY

Christchurch has achieved international acclaim for its creative and clever urban design, evidenced by inspiring street art, new architecture, and a range of new retail, hospitality, innovation, arts and entertainment precincts.

Within an hour from the city, productions can be filming at a sea port, wheat fields, alpine environments, on braided rivers, surf breaks, rolling hills, farm plains, lakes, geographic rock, historic buildings, English gardens, sleepy little town centres, sheltered bays and so much more.

Christchurch is the perfect destination within New Zealand to deliver on large-scale media productions.

You can talk to us at:
bree.loverich@christchurchnz.com



One hour from **CHRISTCHURCH** city & international airport



NEW ZEALAND'S MOST **CONVENIENT** FILMING DESTINATION



STABLE WEATHER

Compared to other major centres in New Zealand, Christchurch is known for its dry, stable and temperate weather.

CHRISTCHURCH

DRY. STABLE. TEMPERATE.



AVERAGE WINTER
12°C



AVERAGE SUMMER
22°C

ANNUAL SUNSHINE
HRS
2143 HRS



AVERAGE ANNUAL RAINFALL
648 MM

AUCKLAND

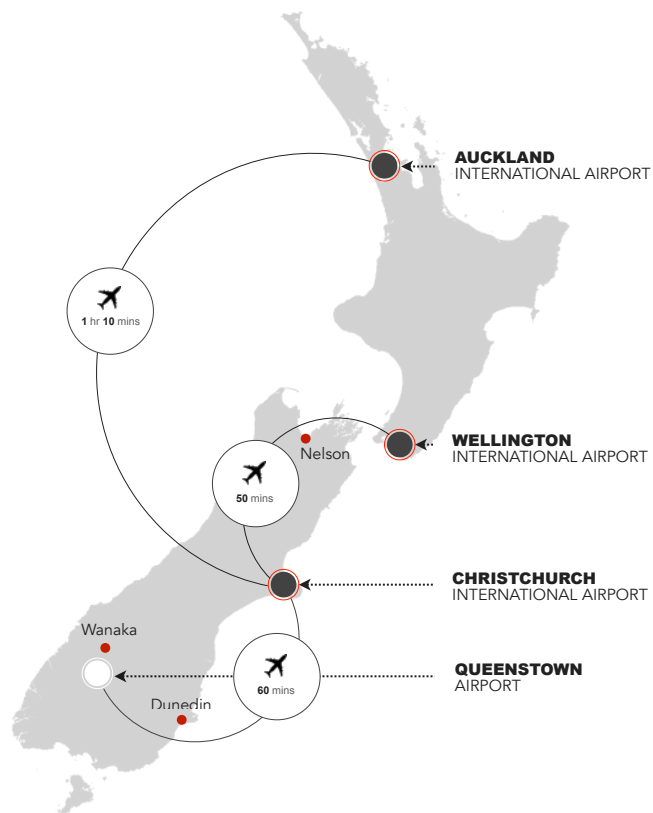
AVERAGE SUMMER: 23°C
AVERAGE WINTER: 14°C
ANNUAL SUNSHINE HRS: 2060 HRS
AVERAGE RAINFALL: 1240 MM

WELLINGTON

AVERAGE SUMMER: 20°C
AVERAGE WINTER: 9°C
ANNUAL SUNSHINE HRS: 2025 HRS
AVERAGE RAINFALL: 1249 MM

CHRISTCHURCH IS YOUR **GATEWAY** TO THE SOUTH ISLAND.

DOMESTIC CONNECTIVITY



	WANAKA	QUEENSTOWN	DUNEDIN	NELSON
CHRISTCHURCH	5 HRS	6 HRS	5 HRS	6 HRS

INTERNATIONAL CONNECTIVITY

Christchurch International Airport is New Zealand's second largest airport providing a major hub and strategic connection to the world's film & television markets.

The new integrated terminal offers a first class Airport experience with large passenger lounges, extra seating, improved passenger flows and enhanced retail and café areas.

Further connections through Auckland International airport are readily available, with frequent daily services and just over a one hour flight time.

Christchurch Airport is located just ten kilometres from the heart of Christchurch's CBD. This journey is an easy 15 minute drive. Taxi companies, hire cars and shuttle services are all regularly available to transport you to your accommodation.

- 10** INTERNATIONAL AIRLINES **FLY DIRECT TO CHRISTCHURCH** FROM 12 DIFFERENT LOCATIONS **ACROSS THE WORLD**
- 115** WEEKLY FLIGHTS **CONNECTING CHRISTCHURCH TO THE WORLD**

AIRLINES FLYING INTO CHRISTCHURCH

CHRISTCHURCH FILM LOCATIONS

[CLICK HERE FOR A FILM ABOUT CHRISTCHURCH](#)

[CLICK HERE FOR THE FILM LOCATIONS IMAGE LIBRARY OF
SCREEN CANTERBURY NZ](#)

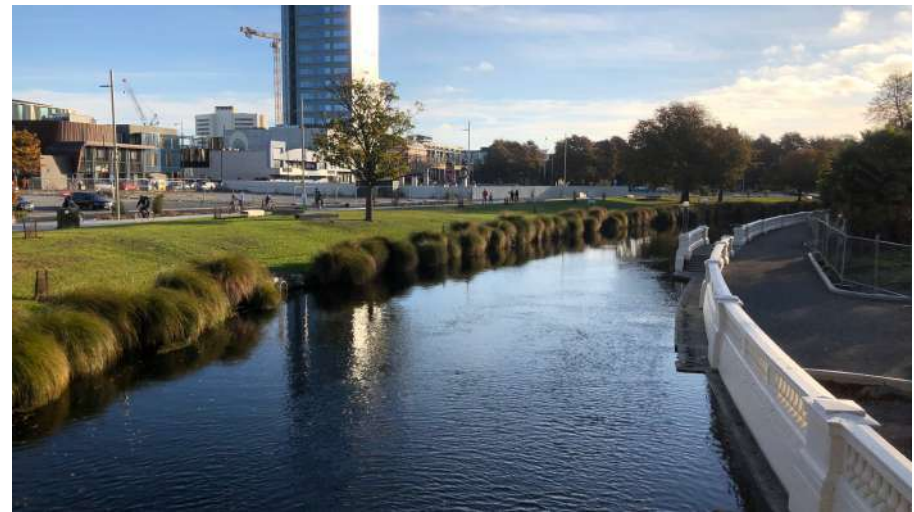




CHRISTCHURCH LOCATIONS: **MODERN ARCHITECTURE**

[MORE LOCATIONS](#)





CHRISTCHURCH LOCATIONS: **BLUE & GREEN COVER** [MORE LOCATIONS](#)





CHRISTCHURCH LOCATIONS
HISTORIC ARCHITECTURE

[MORE LOCATIONS](#)





CHRISTCHURCH LOCATIONS: **CONFINED SPACES**
[MORE LOCATIONS](#)





SCREEN CANTERBURYNZ

REGIONAL FILM OFFICE

Screen CanterburyNZ main role is to coordinate with production companies to gain the necessary approvals and/or information from relevant members of the local community, local government and impacted stakeholders.

- Provide information and assistance relating to filming in Christchurch and Canterbury.
- Ensure a quick turnaround for approvals.
- Coordinate with City and local bodies to issue permits for the use of public land.
- Advocate for the screen production industry.
- Liaise with a range of local services.
- Coordinate with local authorities and location scouts to provide a seamless production experience across a diverse range of locations.

— YOUR FRIENDLY SCREEN CANTERBURYNZ OFFICE —



BREE LOVERICH | Programme Manager – Destination

Phone: +64 3 379 5575 | **Mobile:** +64 27 348 8841

Email: bree.loverich@christchurchnz.com

SCREEN CANTERBURYNZ: BNZ Centre, Level 3,
101 Cashel Street, Christchurch 8011.

WELCOME TO

CANTERBURY



Canterbury has a long history of delivering on productions of scale in feature films, especially in the **fantasy film genre**, offering ease of access to a diverse range of picturesque and easily accessible locations.

CANTERBURY HAS **DELIVERED** FOR LARGE SCALE PRODUCTIONS

EASILY ACCESSIBLE LOCATIONS

A snapshot of some of the most scenic and diverse landscapes within 4 hours driving time of each other.



CHRISTCHURCH	FLOCK HILL	MT. SUNDAY	LAKE PUKAKI	TWIZEL	MT. COOK	MT. GUNN
	1 HR	2.5 HRS	3 HRS	3.5 HRS	4 HRS	3 HRS



Twizel's alpine magic was captured on-film in both *The Hobbit: An Unexpected Journey* and *The Lord of the Rings Trilogy*. Part of the Warg chase was filmed here; and the largest battle scene ever, the Battle of the Pelennor Fields.



Mt. Cook and its surrounding alpine peaks are used in the backdrop of some of the aerial filming in *The Hobbit: An Unexpected Journey*.



Stunning Lake Pukaki was chosen as the location for Lake Town in *The Hobbit: The Desolation of Smaug*. Braemar Station at Lake Pukaki was used in *The Hobbit: An Unexpected Journey* to portray epic scenic shots, the 'Warg Chase' and approach to Rivendell. It was transformed into the utopian planet Uriel in a *Wrinkle in Time*.



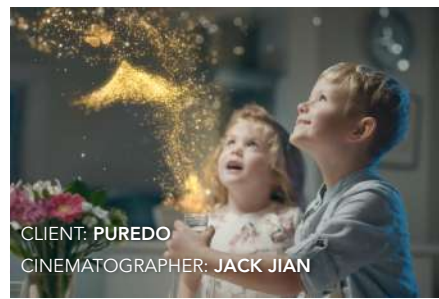
This stunning location in Canterbury is the backdrop for Edoras, the capital of Rohan. You can easily picture where the Edoras set was on top of Mt. Sunday in *The Lord of the Rings Trilogy*.



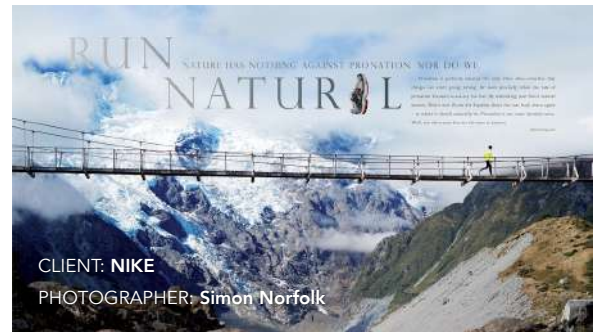
The Chronicles of Narnia, high in the Southern Alps of the South Island is an area of tortured rocks and dramatic valleys known as Flock Hill. It was here that director Adamson created the scenes for the great battle for Narnia.



Mt. Gunn on the West Coast was one of the stunning locations where the beacons were lit between Gondor and Rohan in *Lord of the Rings Trilogy*.



CANTERBURY PRODUCTIONS
**PRODUCTION IMAGES OF PROJECTS FILMED IN
 CANTERBURY**



CANTERBURY FILM LOCATIONS



CLICK HERE FOR THE FILM LOCATIONS IMAGE LIBRARY OF
SCREEN CANTERBURY NZ





CANTERBURY LOCATIONS: **LAKES / STREAMS / RIVERS / SEA** [MORE LOCATIONS](#)





CANTERBURY LOCATIONS
ROADS

[MORE LOCATIONS](#)





CANTERBURY LOCATIONS: **MOUNTAINS / ALPINE**

[MORE LOCATIONS](#)





CANTERBURY LOCATIONS: **GRASSLANDS**

[MORE LOCATIONS](#)





CANTERBURY LOCATIONS: **GLACIERS & SNOW**

[MORE LOCATIONS](#)



CANTERBURY ACCOMMODATION

THERE ARE 100'S OF ACCOMMODATION OPTIONS TO SUIT A VARIETY OF BUDGETS IN CHRISTCHURCH & CANTERBURY



5 STAR HOTELS



2-4 STAR HOTELS



MOTELS



RESORTS



BED & BREAKFASTS



AIR B&B



CAMPERVANS



CAMPGROUNDS



NEW ZEALAND SCREEN INCENTIVES

[CLICK HERE FOR MORE INFORMATION](#)

The New Zealand Screen Production Grant encourages medium to large budget productions, both from New Zealand and overseas, to locate here. International productions are eligible for a cash grant of 20% of Qualifying New Zealand Production Expenditure (QNZPE), with a 5% uplift available for a smaller number of productions that are invited to apply and can demonstrate significant additional economic benefit to New Zealand. PDV productions can access a grant of 20% of QNZPE up to QNZPE of \$25 million, and 18% of QNZPE for QNZPE above \$25 million. [more info...](#)

0%

GST FREE LOCATION

New Zealand producers do not charge GST to international shoots that film here. GST is also refunded post-shoot on all expenses, with receipts, that have incurred GST.

GST is a local tax and doesn't apply to international productions that come into New Zealand to film.



DRONE REGULATIONS FOR NEW ZEALAND

Flying drones in the Canterbury region is allowed but subject to New Zealand laws for unmanned aircraft.

Two Parts of the Civil Aviation Authority (CAA) Rules apply specifically to drones and other unmanned aircraft.

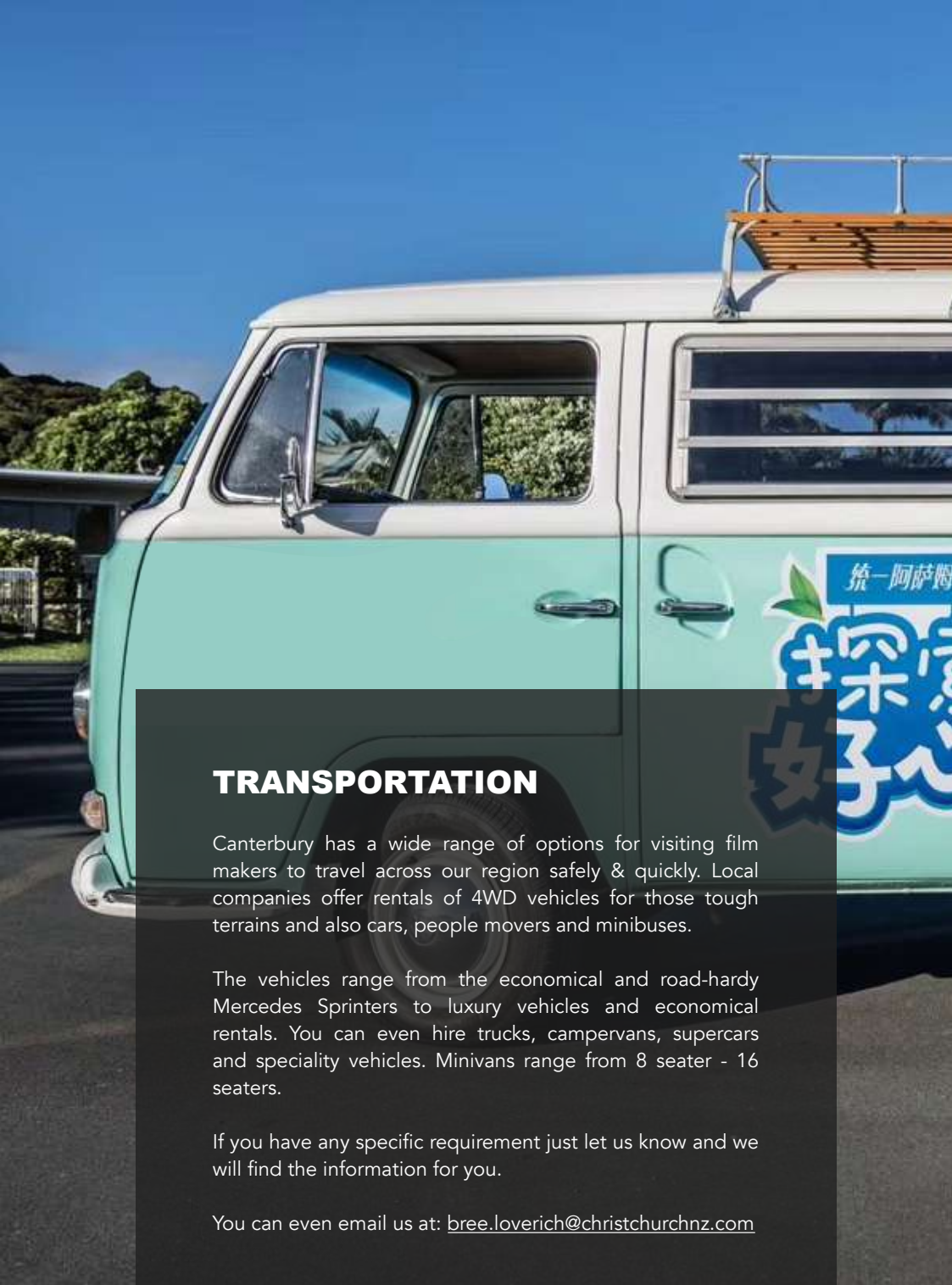
Intro to Part 101 - Everybody flying a drone must comply with the rules in Part 101, unless they have been granted a variation to those rules by the CAA.

Intro to Part 102 - Part 102 details the requirements for gaining an Unmanned Aircraft Operator Certificate. Anybody flying an unmanned aircraft with a take-off weight of more than 25kg, or requiring a variation from the Part 101 rules, must be certified.

For more information about flying drones in New Zealand, and to contact approved drone operators, please visit:

www.airshare.co.nz

YOU CAN ALSO VISIT: <https://www.flyyourdrone.nz>



TRANSPORTATION

Canterbury has a wide range of options for visiting film makers to travel across our region safely & quickly. Local companies offer rentals of 4WD vehicles for those tough terrains and also cars, people movers and minibuses.

The vehicles range from the economical and road-hardy Mercedes Sprinters to luxury vehicles and economical rentals. You can even hire trucks, campervans, supercars and speciality vehicles. Minivans range from 8 seater - 16 seaters.

If you have any specific requirement just let us know and we will find the information for you.

You can even email us at: bree.loverich@christchurchnz.com

VEHICLES YOU CAN RENT FROM **CANTERBURY** 2 SEATER HELICOPTERS - 16 SEATER MINI VANS

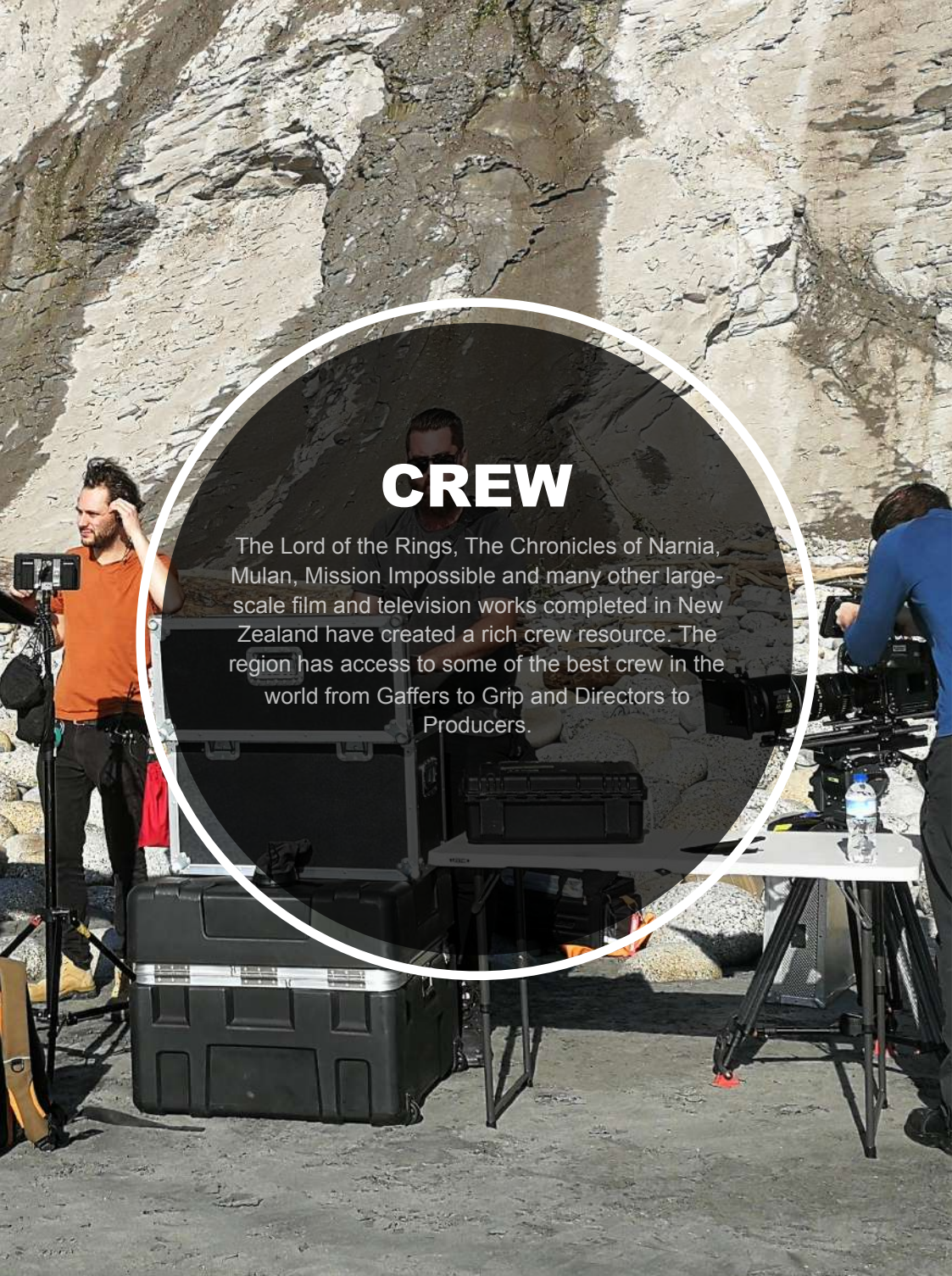


A HUGE RANGE OF VEHICLES ARE AVAILABLE FOR
SHORT TERM & LONG TERM RENTAL

A photograph of a film set. In the foreground, a camera operator is seen from behind, wearing a dark jacket and operating a professional video camera. The camera is pointed towards a woman in the background. She has long dark hair and is wearing a blue jacket. The setting appears to be an indoor space with large windows, possibly at night, with some blurred lights and a potted plant visible. The overall mood is professional and focused.

CREW & CAST

New Zealand has a large number of actors, models, presenters and other professional personnel. As an immigrant country, New Zealand's population is made up of people of all colours and races, from east Asia, central Asia, southeast Asia, the Middle East, Europe, America, South America and Africa, so we can easily find a variety of facial features and actors who are good at different languages.



CREW

The Lord of the Rings, The Chronicles of Narnia, Mulan, Mission Impossible and many other large-scale film and television works completed in New Zealand have created a rich crew resource. The region has access to some of the best crew in the world from Gaffers to Grip and Directors to Producers.



CREW AVAILABLE IN NEW ZEALAND / CANTERBURY

- Directors
- 1st Assistant Directors
- 2nd Assistant Directors
- 3rd Assistant Directors
- Continuity Supervisor
- Producers
- Line Producers
- Production Managers
- Production Coordinators
- Production Assistants
- Production Researchers
- Production Runners
- Production Drivers
- Location Scouts
- Location Managers
- Location Assistants
- Casting Directors & Coordinators
- Production Designers
- Art Directors
- Art Coordinators
- Art Department Assistants
- Props Buyers
- Food Stylists
- Set Dressers
- Animal Trainers
- Director of Photography
- Camera Operators
- 1st Assistant Camera
- 2nd Assistant Camera
- Digital Split/Video Assist Operators
- Steadicam Operators
- Drone Operators
- Data Wranglers
- Gaffers
- Electricians
- Best Boys
- Generator operators
- Grip/Gaffer Combo
- Key Grips
- Grip Assistants
- Costume Supervisors
- Costume Assistants
- Makeup Supervisor
- Make Up Assistants
- Makeup/Wardrobe Combo
- Special Effects Makeup
- Hairdressers
- Sound Recordists
- Boom Operators
- Unit Assistants
- Unit Managers
- Catering
- Safety Officer
- Swing Drivers
- Post Production Supervisors
- Post Production Editors

YOU CAN ALSO VISIT:

[DATA BOOK NZ](#)

[CREW LIST NZ](#)



CANTERBURY
CREW PICTURES





CHRISTCHURCH TALENT : **A SNAPSHOT OF ACTORS & MODELS AVAILABLE**





**screen
canterburynz**

2019 CANTERBURY & WEST COAST FILM LOOK BOOK | NEW ZEALAND

CONTACT

YOUR FRIENDLY SCREEN CANTERBURYNZ OFFICE



BREE LOVERICH | Programme Manager – Destination

Phone: +64 3 379 5575 | **Mobile:** +64 27 348 8841

Email: bree.loverich@christchurchnz.com

SCREEN CANTERBURYNZ: BNZ Centre, Level 3,
101 Cashel Street, Christchurch 8011.